

Mission, vision and the rationale

of Bigland Green Primary School _ 10 July 2019

Mission

Bigland Green aims to improve children's life chances by providing them with the knowledge, skills and care to be:

- **successful learners** who enjoy learning, make progress and achieve;
- **confident individuals** who are able to live safe, healthy and fulfilling lives, and;
- **responsible citizens** who make a positive contribution to society and the world.

Vision

The school has identified six steps to achieving its mission. These six steps to success are encapsulated in the school's **Learning Vision**. All key stakeholders (pupils, staff, parents, governors and volunteers) will strive for the full and effective implementation of the Learning Vision.



Character education

Know and use the life skills required for high achievement, excellence and fulfilment. Be a good human being and respect differences.



High expectations

Doing the right thing all day, every day and taking great pride in what we do.



Curiosity and challenge

Being curious about the world around – thinking and asking Big Questions to increase our knowledge and understanding.



Resilience and teamwork

Never giving up when things are tough and always striving together to get the best for everyone.



Pace and balance

Using every available moment for our best learning. Growing with and promoting the Big Values.



Aspiration to inspire

Having dreams that excite us and others in our school community and beyond.

Rationale

Bigland Green believes that school matters. Regardless of the myriad of challenges faced by children and their families, an effective school can make a positive difference to their lives. An effective school reflects its community and devises strategies to overcome the barriers posed by socio-economic deprivation and defy the curse of social disadvantages.

Bigland Green has a broad and balanced curriculum and strives to provide irresistible learning to all its pupils. The curriculum intent and its implementation address the issues surrounding cultural capital so that every pupil has an increased life chance. The governors, staff members, parents and volunteers of the school work as a strong team and ensure that all pupils achieve their best.

Values

Bigland Green has an absolute commitment to staff well-being so that they can deliver a first-class education. The well behaved, hardworking pupils who love attending school every day to learn and grow are the centre of attention. At the heart of the school's work is to make teaching and learning more enjoyable and a worthwhile experience for everyone.

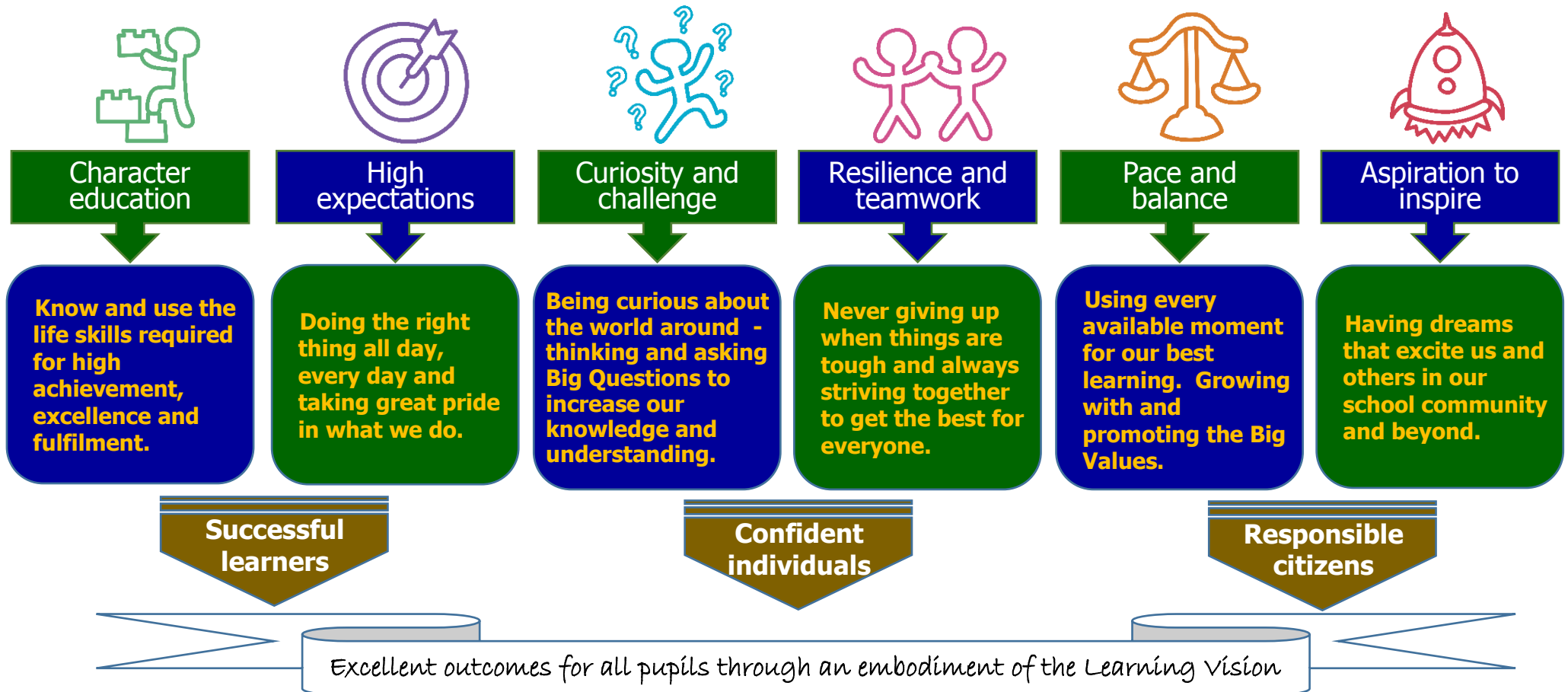
The school has clear policies and guidance to ensure that all stakeholders can support the school in achieving its mission. The Learning Vision is the foundation of the school's ethos and sets out the way we do things at this school.

Bigland Green Learning Vision

The school has identified six steps to achieving its mission. These six steps to success are encapsulated in the school's Learning Vision. All key stakeholders (pupils, staff, parents, governors and volunteers) will strive for the full and effective implementation of the Learning Vision.

Bigland Green Learning Vision

Six steps to success @ a great place to learn and grow



Bigland Green - a great place to learn & grow